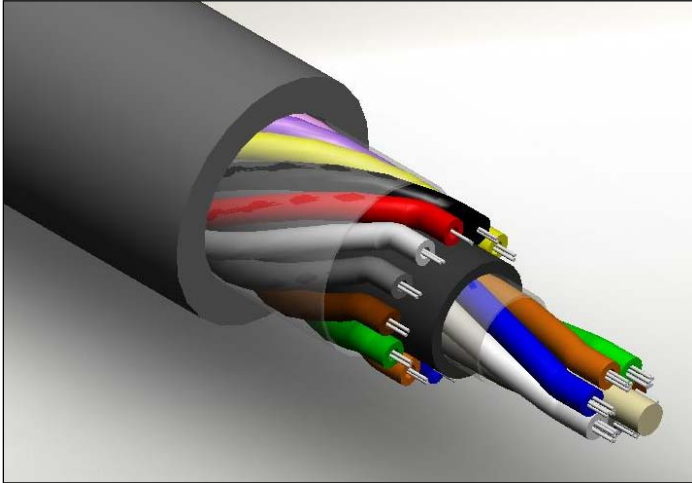


LIGHTLOC[®]

SmartComm[®] Alarmed Communication Cable



SmartComm is a product in the LightLOC family designed for providing secure communications especially through remote or non-surveyed areas. It is a fiber-optic cable with the look, feel, and performance of a standard stranded loose tube cable but is unique in that intrusion detection sensing is incorporated into the package. Guard fibers comprise an outer layer of this multi-layer cable and surround inner communication fibers to provide detection capability. They are continually

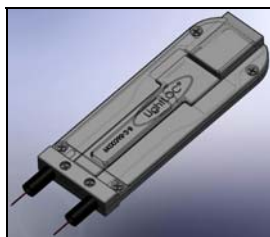
monitored by a Network Level LightLOC System or LightLOC Express affording protection to the inner fibers. Accessing the communication fibers requires the guard fibers be compromised, thus, triggering an alarm at the monitoring station. When monitored by the Network Level System, the alarm location may be pinpointed, typically within 5 meters.

SmartComm is designed for a zero false alarm rate. Guard fibers are rugged enough to not cause an alarm from simple handling or vibration of the cable. Only severe damage or cutting of these fibers causes an alarm. Additionally, the cable is constructed with no metallic components and a thick, opaque outer jacket. It neither emits nor carries electromagnetic fields or allows leakage of carried light making it TEMPEST compliant for installation in and around secure environments.

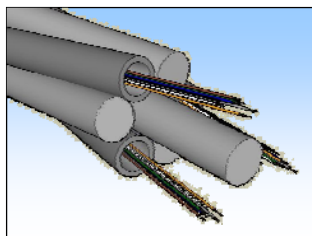
SmartComm can be deployed using a host of methods ranging from traditional aerial, duct, and direct burial to attaching to existing fencing and buildings. It may also be manufactured with the addition of a helically-applied layer of aluminum-clad steel wires and an outer protective polyethylene jacket. These layers provide superior mechanical protection in cases where ballistics or crush forces are of concern, including exposed aerial, direct bury, underwater, sub sea, and tactical installations. In this configuration, it may be used as a cost-effective and time-saving alternative to building a concrete duct bank deep in the ground as is traditionally done for high security applications. A system may contain both the armored and non-armored versions of the SmartComm cable.

For additional information on the LightLOC[®] system, please contact Doug Piper at 864.963.5131 or dpiper@wovenelectronics.com. Specifications are subject to change.

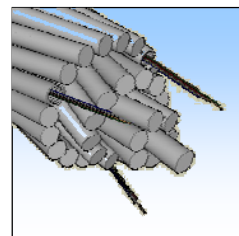
The family of LightLOC sensors is continuously growing! Current sensing products include:



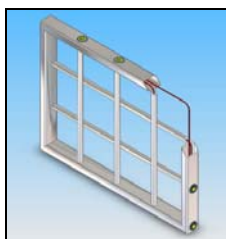
Manhole Lid Sensors



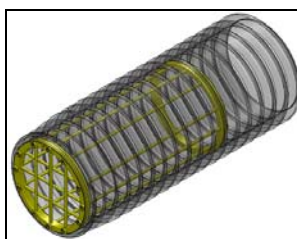
Vehicle Detection Cable (3/8")



Vehicle Denial Cable (1")



Smart Grate



CageGrate



SmartGate